



Bureau of Aeronautics

Karla Knorr, PE

WisDOT BOA Director

Division of Transportation Investment Management

Airport Engineer Seminar

April 22nd, 2026

Bureau of Aeronautics Director

- Graduate of UW Platteville in Engineering
- Spent 6 years working for consulting firms
- Spent 19 years working in DTSD SW Region
- Background in Process Improvements – Lean Six Sigma training
- Significant role in the Performance Measures area of DTSD
- Moved to DTIM as Bureau of Aeronautics Director in November 2025



Year in Review

- Moved to a new floor in Hill Farms, 6th Floor
- Final stages of converting our filing structure to Box
- Re-Organization in the Engineering Area
- Identified new staffing needs
 - 2nd Program Engineer
 - Contract Specialist Advanced
 - Programming and Policy Analyst to assist in the Financial Area
 - Staff augmentation contracts to assist in house resources
- Completed an IT project for a new Aircraft Registration System
- Began working on an IT project for a new financial system and a project management system
- Record year for BOA
 - 53 Projects Bid (31 in 2024)
 - 86 Grants Submitted (26 in 2024)
 - \$117 Million in Federal Grants Received (\$66 Million in 2024)



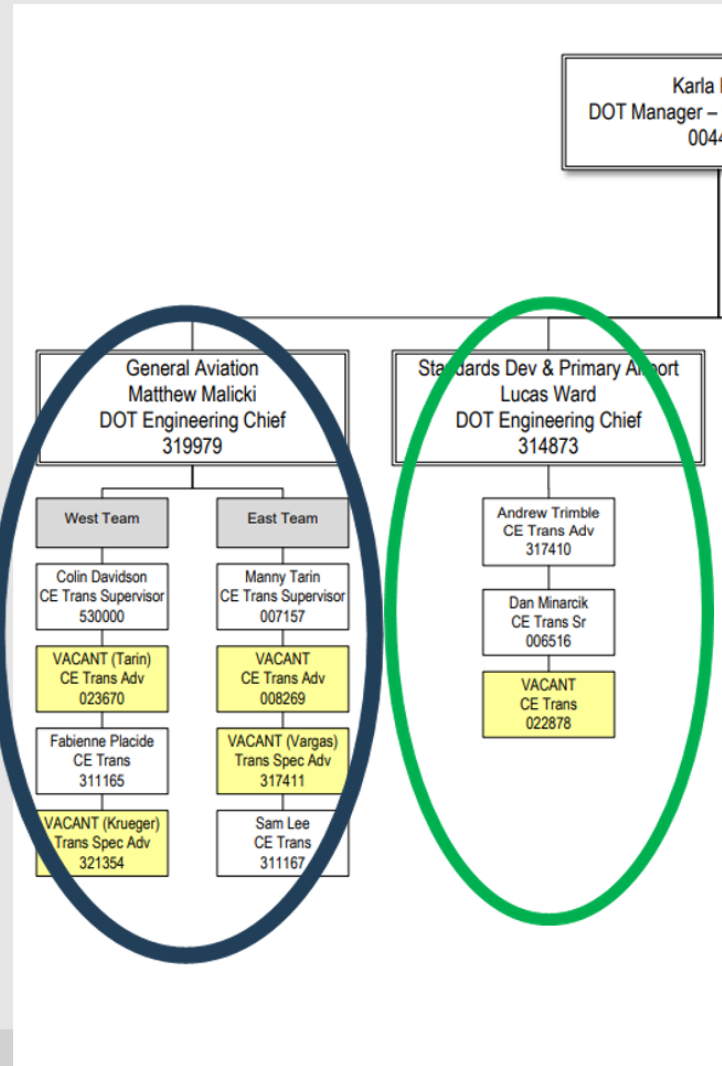
Director Priorities

Priorities

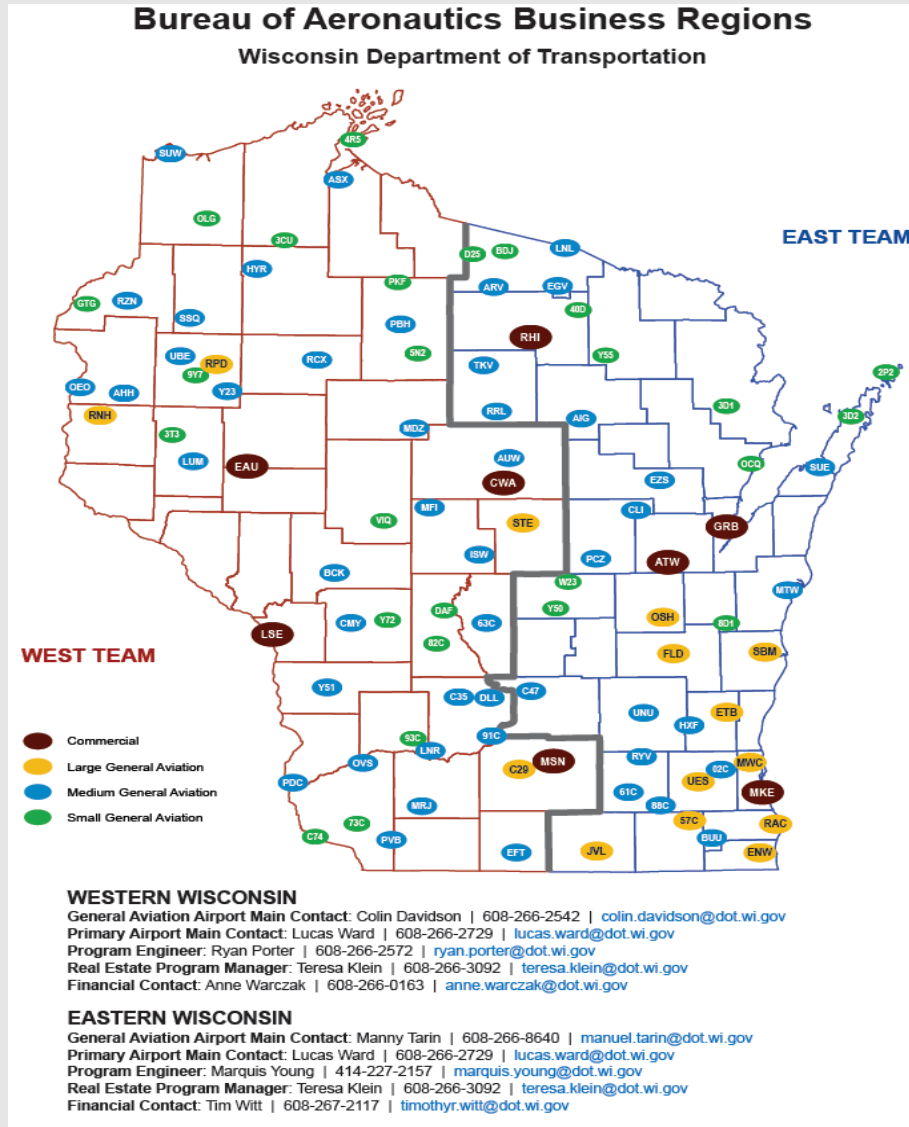
- Focus on BOA Team
- Build Relationships and Trust
- Strengthen our teams performance
 - Enhance and strengthen collaboration and communication with our airports
 - Streamlining processes to improve program delivery



Organizational Changes



Organizational Changes

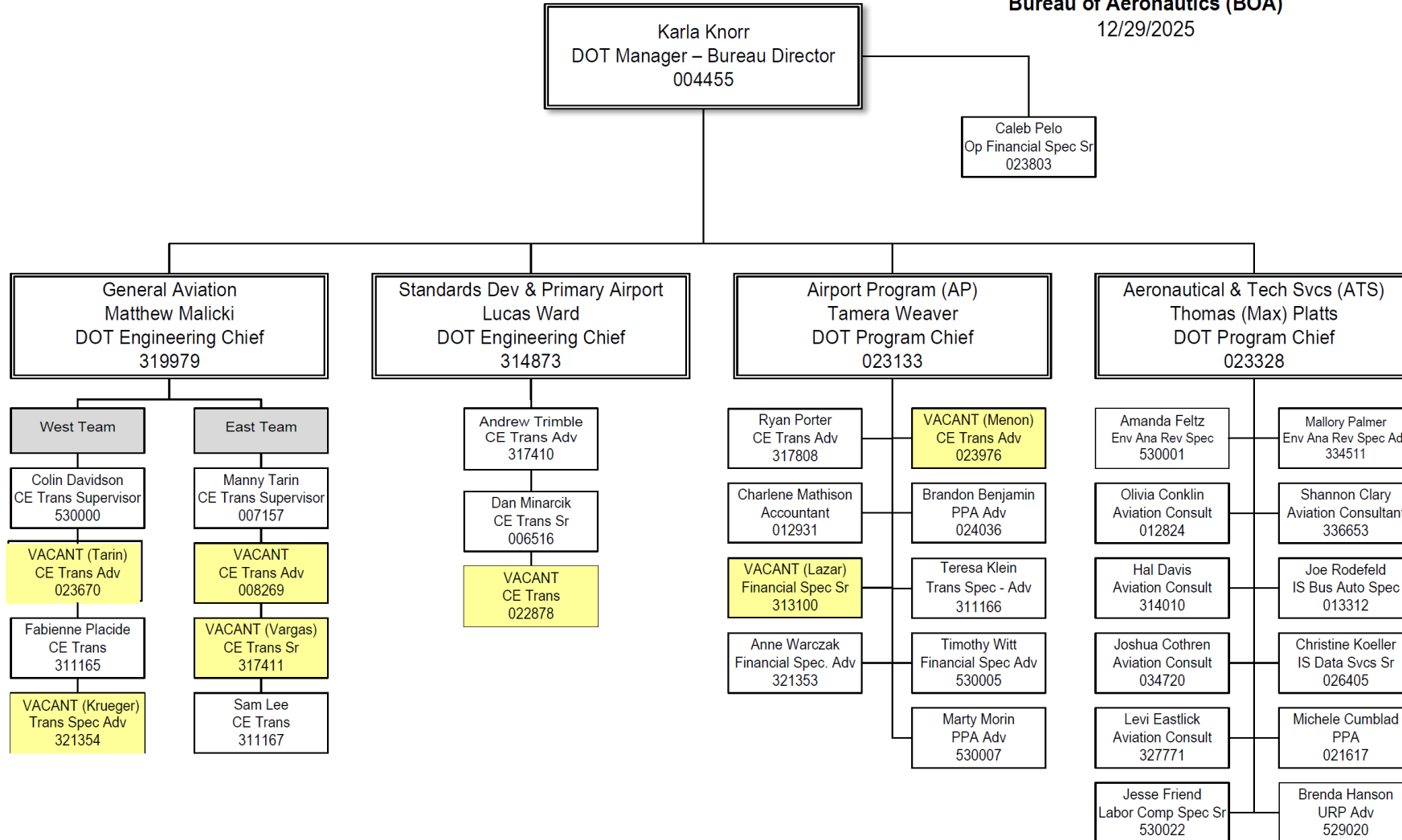


BOA Team – December 2025

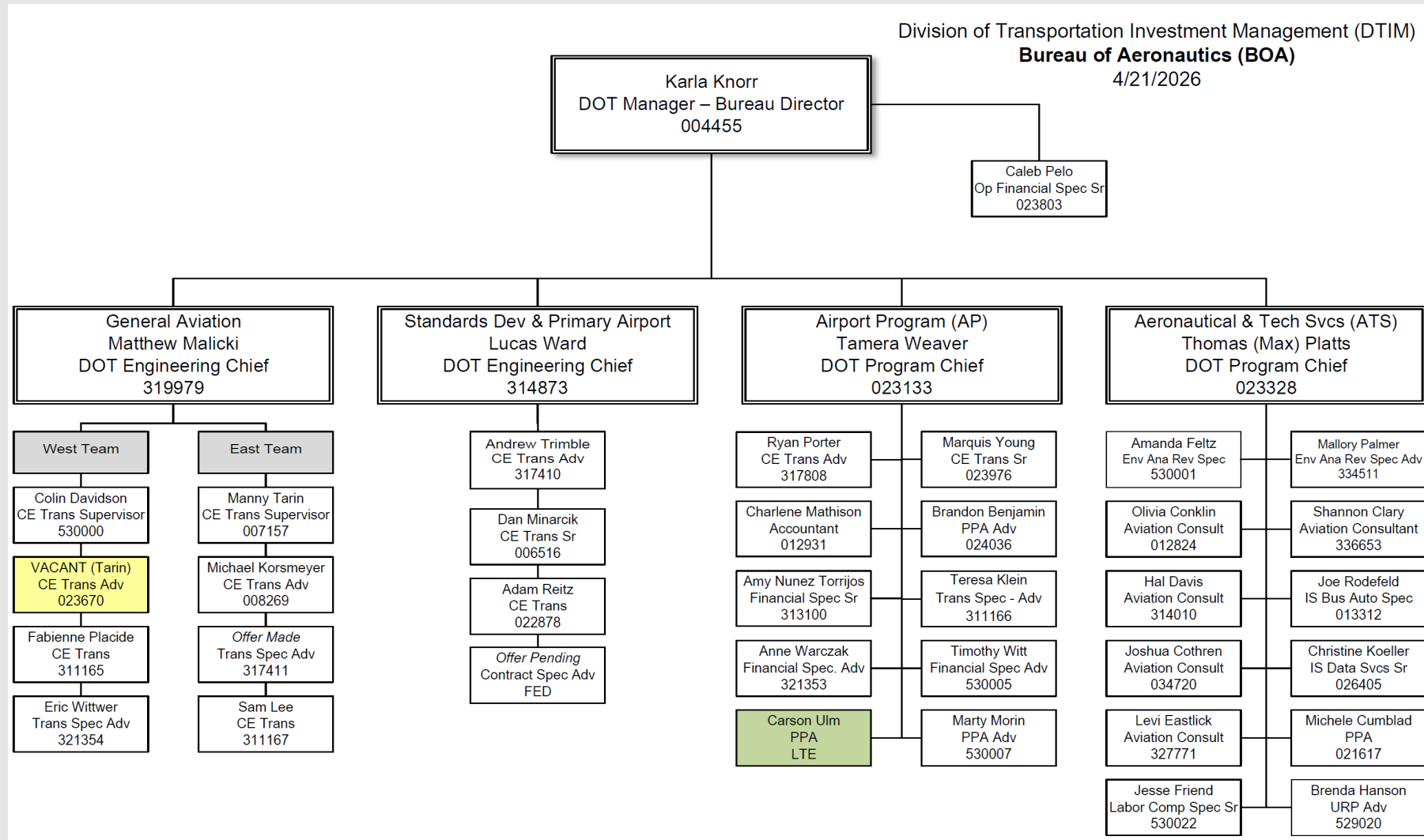
Division of Transportation Investment Management (DTIM)

Bureau of Aeronautics (BOA)

12/29/2025



BOA Team – April 2026



Build Relationships and Trust

- Airports
- Consultant Partners
- FAA
- Counterparts in other states
- WAMA/NASAO



Strengthen Team Performance

- Enhance and strengthen collaboration and communication with our airports
- Streamlining Processes to Improve Program Delivery



Streamline Processes to Improve Program Delivery

- Programming of Projects – Programming Section (Tami)
 - Ensuring projects are started on time
 - Finding process
 - Agency Agreements
 - State Municipal Financial Agreement (SMFA)
- Project Finances – Programming Section
- Eligibility Statement
 - No longer producing an eligibility statement after a petition is received.
 - Eligibility will be conducted prior to processing a finding



Streamline Processes to Improve Program Delivery

- Finding Process

- Transitioning into one Finding per project, submitted at the end of project initiation/beginning of project formulation
- Finding will be estimating the cost of the entire project.
- If entire project costs increase by 50%, a superceeding finding will be needed.

- New SMFA coming soon

- Financial agreement between the state and the airport sponsor, agreeing on costs.
- Updating throughout the life of the project as costs fluctuate.





Thank You!

Karla Knorr

Karla.Knorr@dot.wi.gov

608-246-7965

608-516-6507

